



1501 BROADWAY

The NEW 1501 Broadway

Featuring MKDA designed progressive pre-built & NBI suites

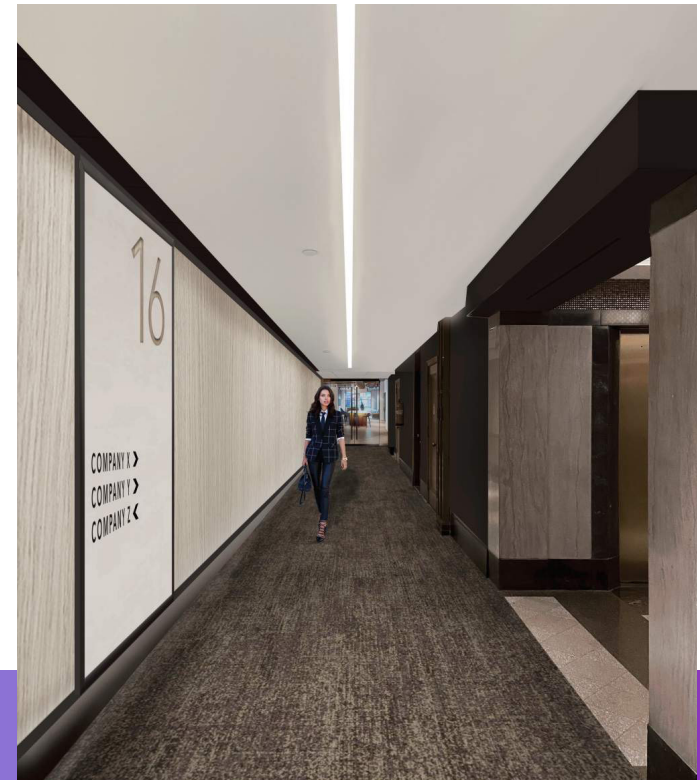
Suites available up to 45,000 RSF

NEWMARK

ICONIC LANDMARKED BUILDING

Entire 30th Floor	3,479 RSF	
Entire 28th Floor	2,682 RSF	
Partial 25th Floor	2,683 RSF	
Partial 19th Floor	3,868 RSF	NEW PREBUILT
Partial 16th Floor	7,634 RSF	NEW PREBUILT
Partial 10th Floor	13,193 RSF	

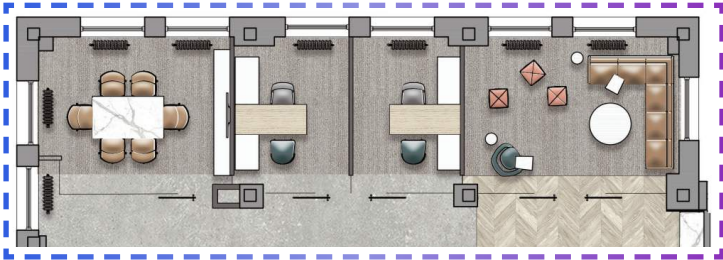
- The NEW 1501 Broadway
- Suites available up to 45,000 RSF
- Boutique full floor tower suites ranging from 2,000-3,500 RSF
- Sweeping views and light
- Featuring MKDA designed progressive PREBUILTS & TURNKEY suites
- Upgraded common corridors and restrooms
- New windows throughout the building
- Brand new lobby – relocated from Broadway to 43rd Street
- Facial recognition and automatic temperature check at turnstiles
- Robust enhanced cleaning for health and safety
- New escalator leading to elevator landing and new elevators
- Macchiato Espresso and Wine Bar and Lounge (Tenant-only amenity)



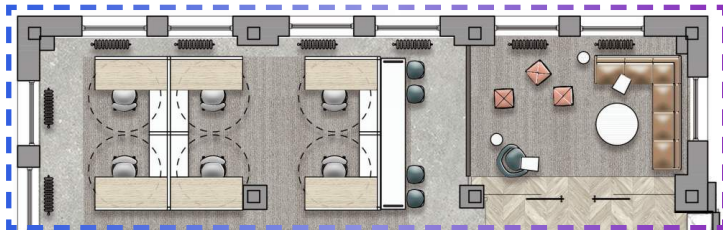
1501 BROADWAY

Partial 16th Floor | **7,634 RSF**





Prebuilt
Option B



Prebuilt
Option A

OPTION A LEGEND

WORKSPACE	SEATS
EXECUTIVE OFFICE	1
PRIVATE OFFICE	3
WORKSTATION (6'X6')	21
RECEPTION	1
TOTAL HEADCOUNT	26

COLLABORATIVE SPACE	
CONFERENCE ROOM	1
MEETING ROOM	0

SUPPORT	
PANTRY	1
PHONE RM/ WELLNESS	1
COAT CLOSET	1
STORAGE	1
IT/STORAGE	1
COPY AREA	1

OPTION B LEGEND

WORKSPACE	SEATS
EXECUTIVE OFFICE	1
PRIVATE OFFICE	5
WORKSTATION (6'X6')	15
RECEPTION	1
TOTAL HEADCOUNT	22

COLLABORATIVE SPACE	
CONFERENCE ROOM	2
MEETING ROOM	1

SUPPORT	
PANTRY	1
PHONE RM/ WELLNESS	1
COAT CLOSET	1
STORAGE	1
IT/STORAGE	1
COPY AREA	1

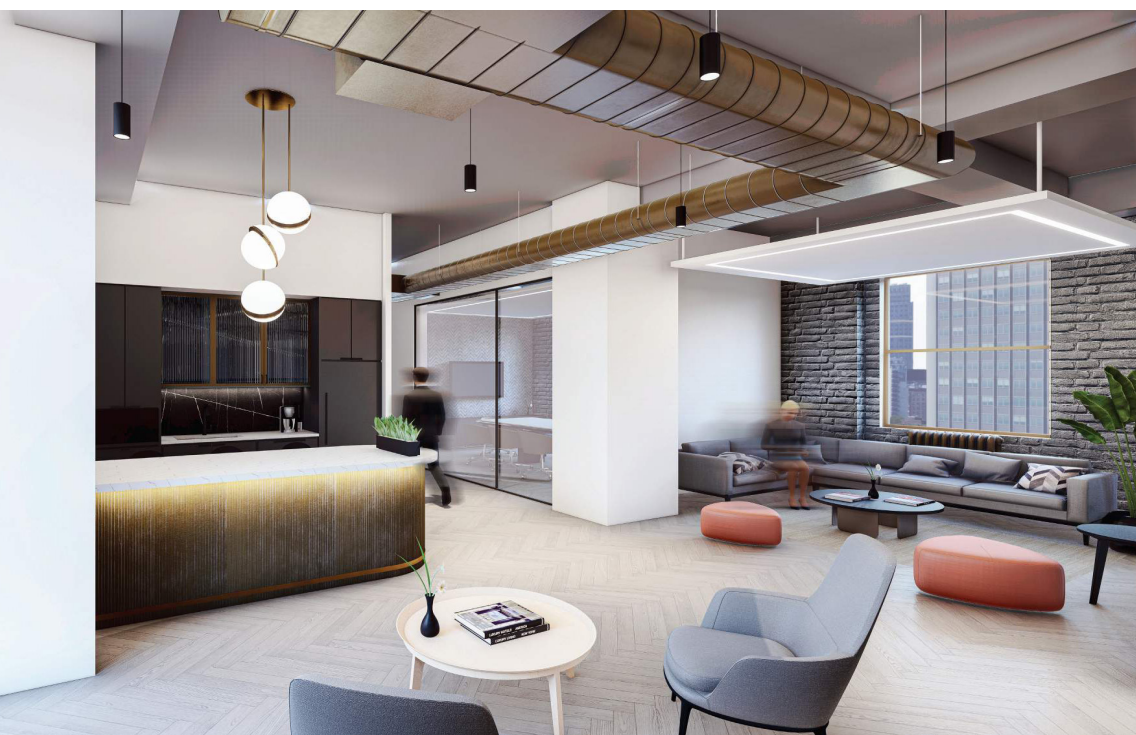
43RD STREET

BROADWAY

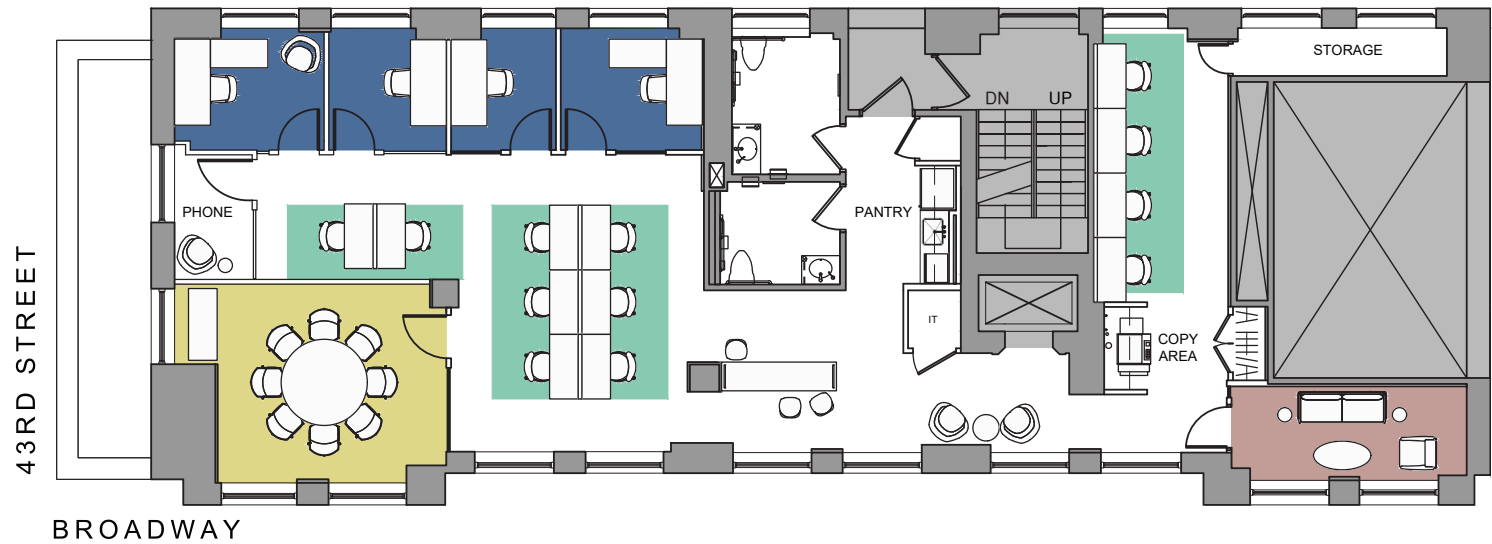
1501 BROADWAY

Partial 19th Floor | **3,868 RSF**





LEGEND	
WORKSPACE	
EXECUTIVE OFFICE	1
PRIVATE OFFICE	2
BENCHING (5'X30")	11
TOTAL HEADCOUNT	14
COLLABORATIVE SPACE	
CONFERENCE ROOM	1
OPEN LOUNGE	1
SUPPORT	
PANTRY	1
COAT CLOSET	1
STORAGE	1
IT	1
COPY AREA	1



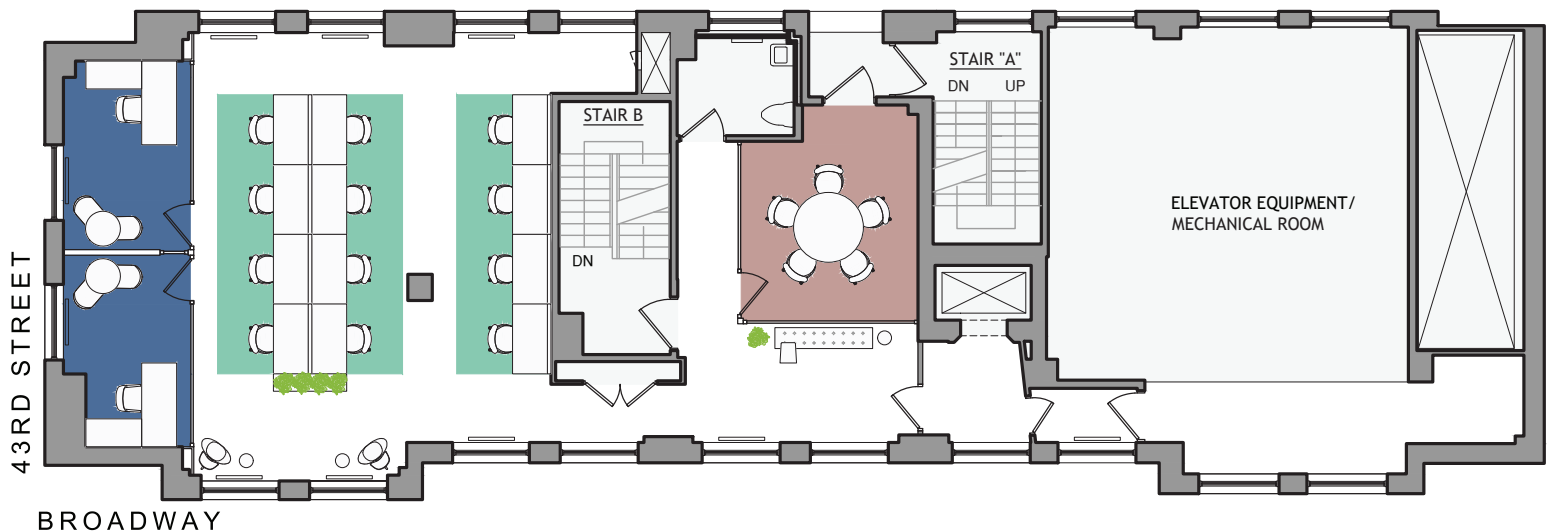
LEGEND

WORKSPACE	SEATS
PRIVATE OFFICE	4
BENCHING (4'6"X2')	12

TOTAL HEADCOUNT	16
-----------------	----

COLLABORATIVE SPACE	
CONFERENCE ROOM	1
MEETING ROOM	1

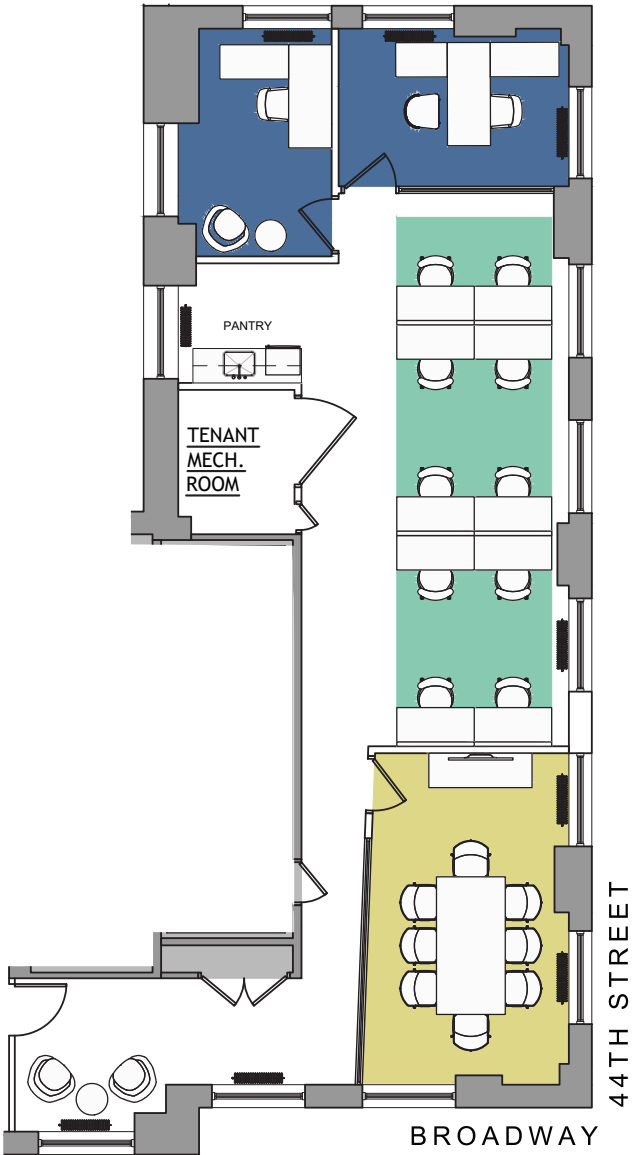
SUPPORT	
PANTRY	1
COAT CLOSET	1
COPY AREA	1
STORAGE	1
IT	1
PHONE ROOM	1



LEGEND

WORKSPACE	SEATS
PRIVATE OFFICE	2
BENCHING (5'X2'-6")	12
TOTAL HEADCOUNT	14

COLLABORATIVE SPACE	
MEETING ROOM	1



LEGEND

WORKSPACE		SEATS
PRIVATE OFFICE		2
BENCHING (4'-6"X2')		10
TOTAL HEADCOUNT		12
COLLABORATIVE SPACE		
CONFERENCE ROOM		1
SUPPORT		
PANTRY		1



LEGEND

WORKSPACE	SEATS
EXECUTIVE OFFICE	1
PRIVATE OFFICE	4
BENCHING (5'X30")	63
RECEPTION	1

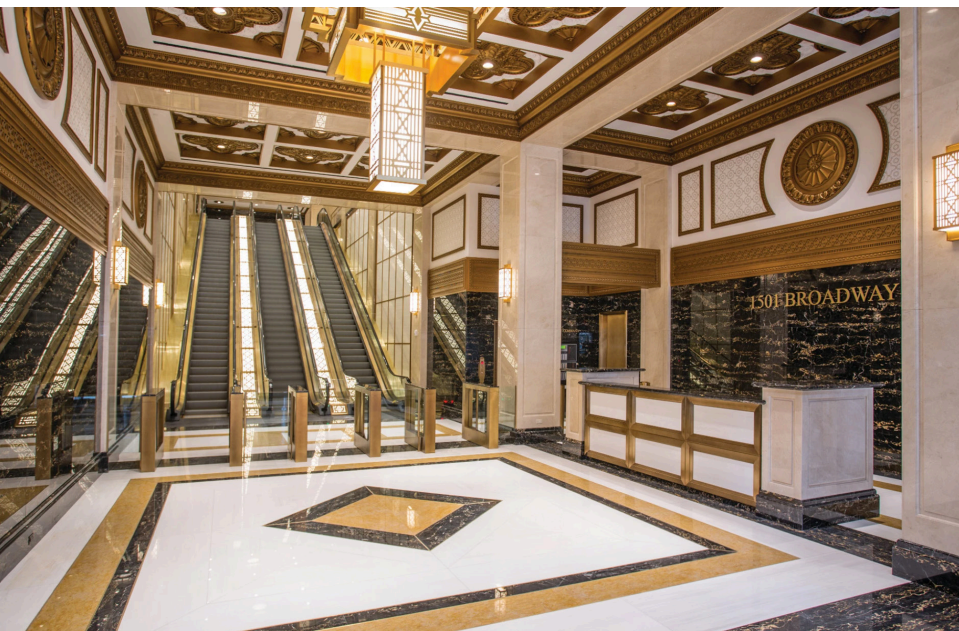
TOTAL HEADCOUNT	68
-----------------	----

COLLABORATIVE SPACE	
CONFERENCE ROOM	3

SUPPORT	
PANTRY	1
PHONE ROOM	3
COAT CLOSET	1
COPY AREA	1
STORAGE	2
IT	1
WELLNESS ROOM	1

1501 BROADWAY

Lobby | Elevator Lobby | Coffee Bar



1501 BROADWAY

Stephen Gordon

t 212-372-2375
sgordon@ngkf.com

Matthew Leon

t 212-372-2041
mleon@ngkf.com

Andrew Margolin

t 212-372-2041
andrew.margolin@ngkf.com

Nathan Kropp

t 212-372-2056
nathan.kropp@ngkf.com

NEWMARK

Paramount
BUILDING