

**LEGEND**

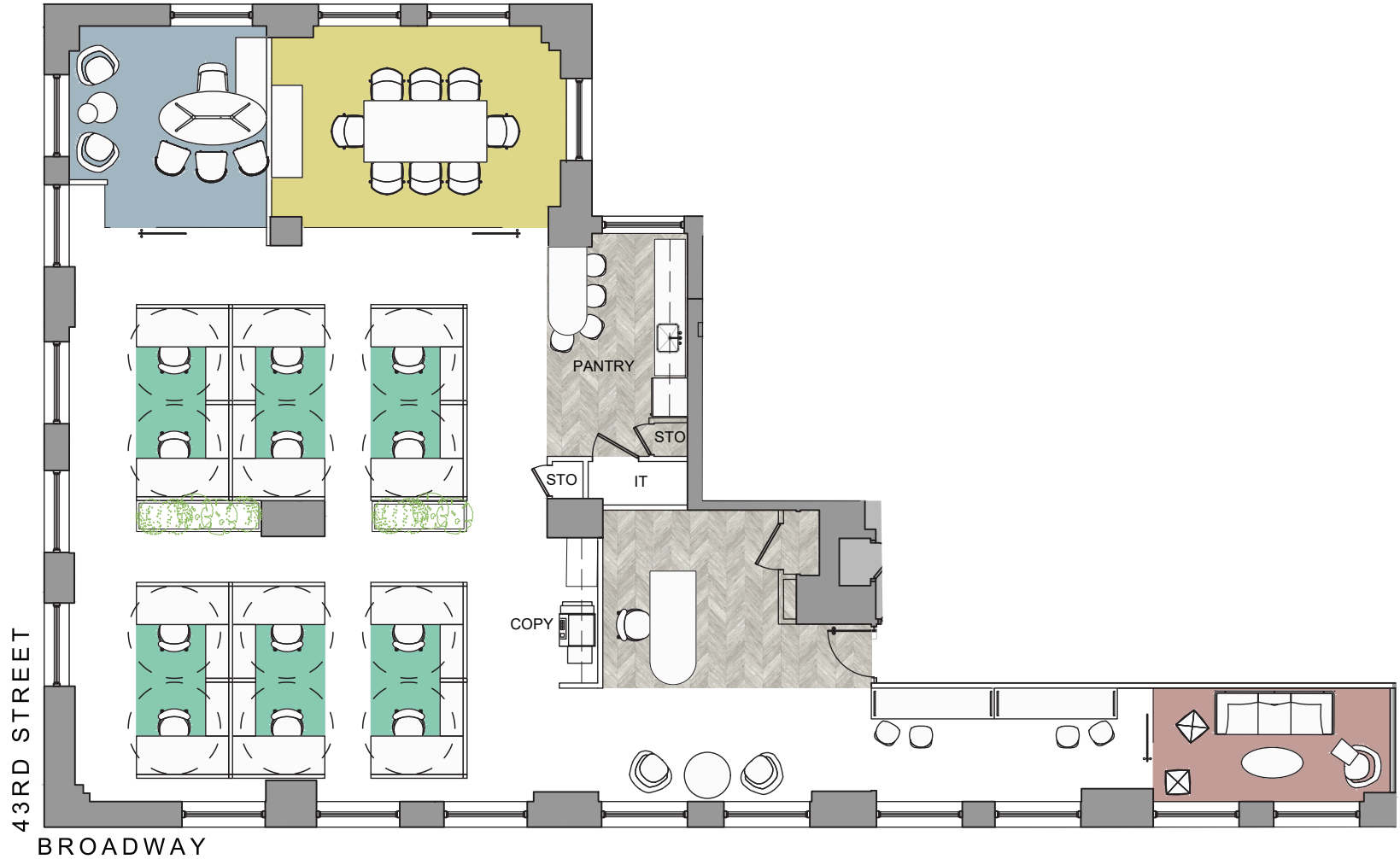
WORKSPACE	SEATS
EXECUTIVE OFFICE	1
WORKSTATION (6'X6')	12
RECEPTION	1
TOTAL HEADCOUNT	14

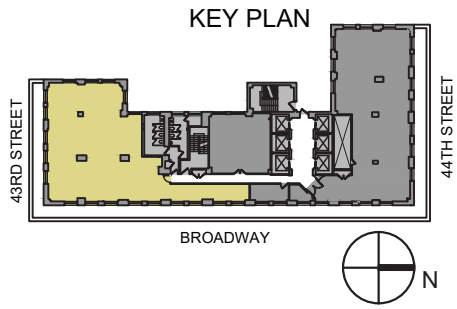
COLLABORATIVE SPACE	
CONFERENCE ROOM	1
MEETING ROOM	1

SUPPORT	
PANTRY	1
COAT CLOSET	1
COPY AREA	1
STORAGE	2
IT	1



*Paramount*  
BUILDING  
1501  
BROADWAY  
23RD FLOOR | SUITE 2310 MARKETING A | 2020



**LEGEND**

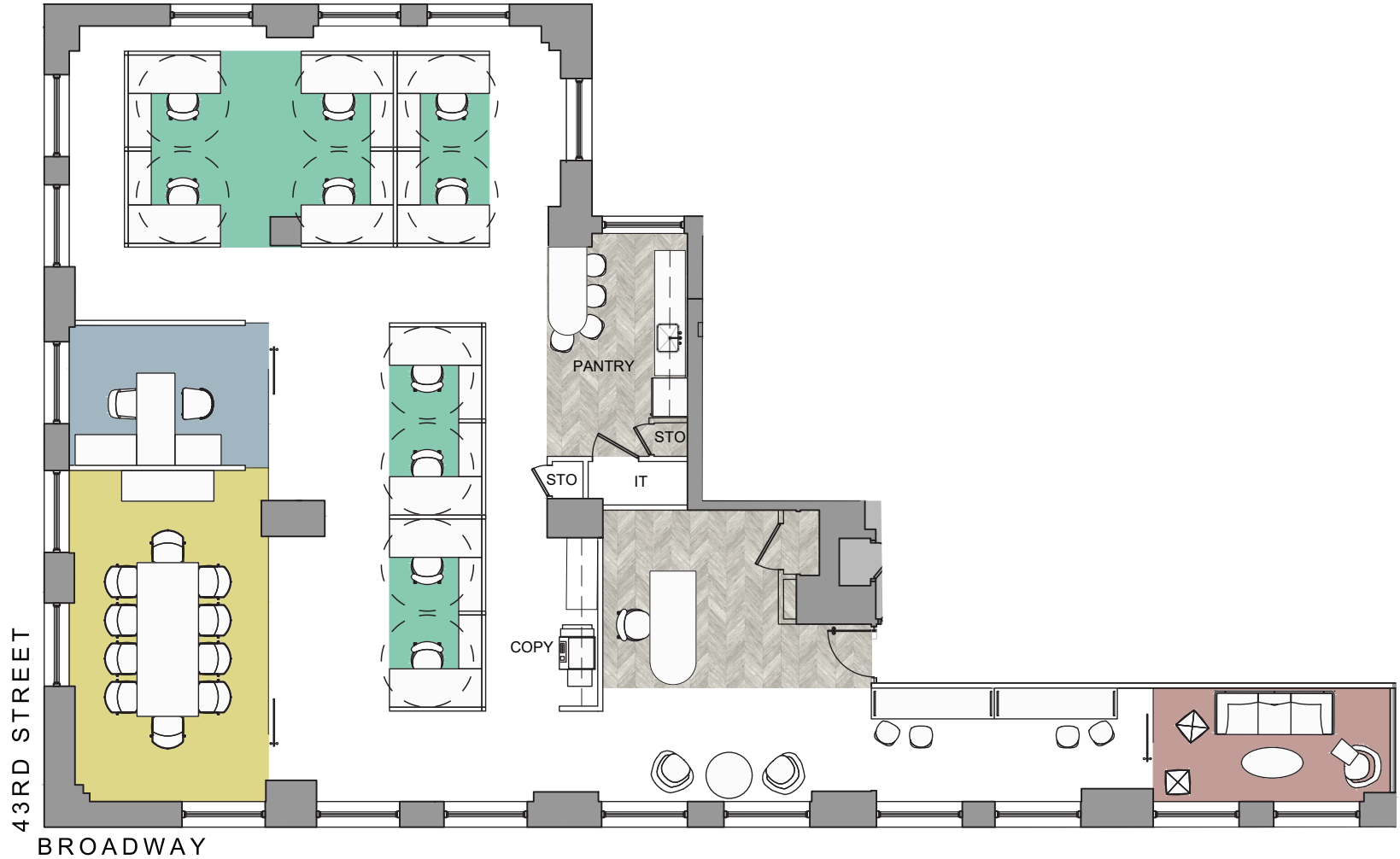
WORKSPACE	SEATS
EXECUTIVE OFFICE	1
WORKSTATION (6'X6')	10
RECEPTION	1
<b>TOTAL HEADCOUNT</b>	<b>12</b>

COLLABORATIVE SPACE	
CONFERENCE ROOM	1
MEETING ROOM	1

SUPPORT	
PANTRY	1
COAT CLOSET	1
COPY AREA	1
STORAGE	2
IT	1



*Paramount*  
BUILDING  
1501  
BROADWAY  
23RD FLOOR | SUITE 2310 MARKETING B | 2020

A map of the study area showing the location of the study building (shaded gray) relative to 43rd Street, 44th Street, and Broadway. A compass rose indicates North (N) is towards the top right.

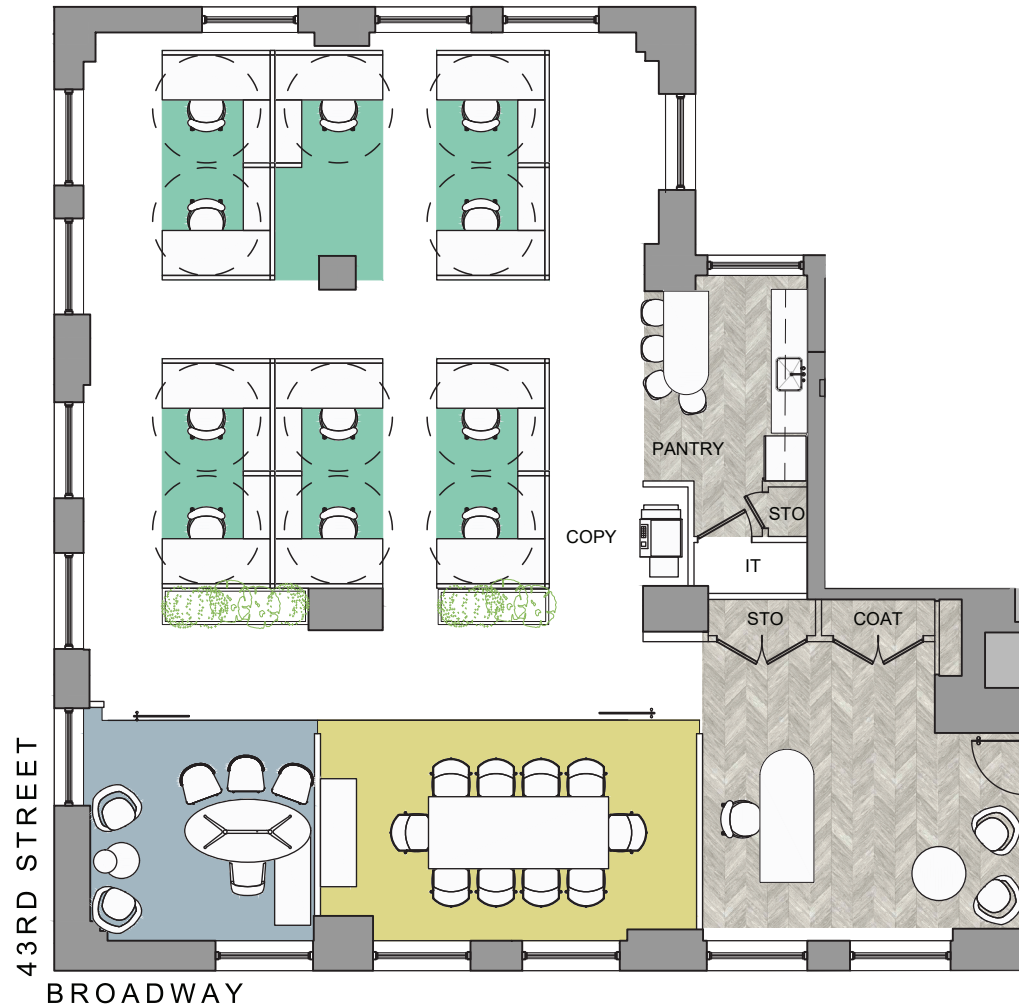
WORKSPACE		SEATS
EXECUTIVE OFFICE		1
WORKSTATION (6'X6')		1
RECEPTION		1
TOTAL HEADCOUNT		13

COLLABORATIVE SPACE	
CONFERENCE ROOM	1

SUPPORT	
PANTRY	1
COAT CLOSET	1
COPY AREA	1
STORAGE	2
IT	1



**Paramount**  
BUILDING  
1501  
BROADWAY  
23RD FLOOR | SUITE 2310 MARKETING C | 2020